



ADVANCED FORMLINERS, LLC
www.advancedformliners.com

1000XXL 1/2 BOND MODULAR BRICK

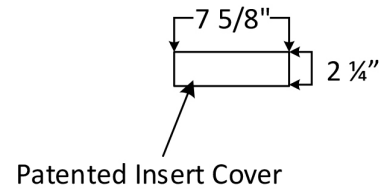
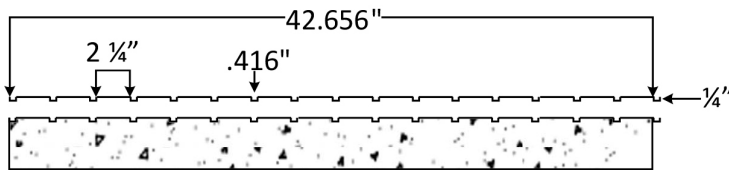
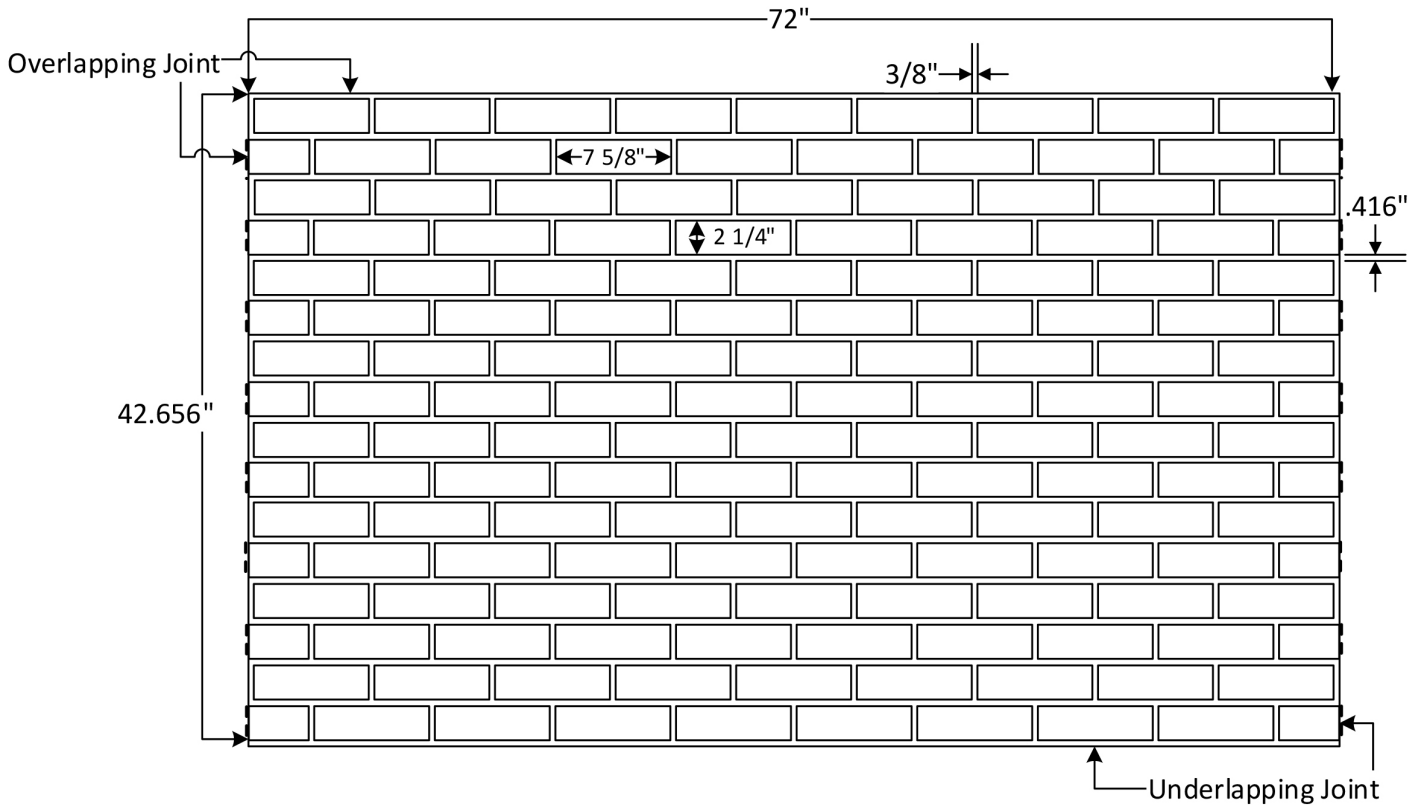
SOLOCAST SEAMLESS IMPRINT FORMLINER

Patent No. US 8,852,724 B2

Sheet size: 72" W X 42.656" H
 Square ft per sheet: 21.328"
 Vertical joint width: 3/8"
 Horizontal joint width: .416"
 Joint height: 1/4"

Available in thin and thick plastic

Solocast Seamless



----- Match

Patented Insert
Covers (PIC): 7 5/8" x 2 1/4"

Brick Size: 7 5/8" x 2 1/4"

Part Size: 72" W x 42.656" H

Maximum Depth: 1/4"

ADVANCED FORMLINERS, LLC
www.advancedformliners.com

Bob Calmes, National Sales Manager
(920) 819-9851 | bob@advancedformliners.com



ADVANCED FORMLINERS, LLC
www.advancedformliners.com

1000XXL 1/2 BOND MODULAR BRICK

SOLOCAST SEAMLESS IMPRINT FORMLINER

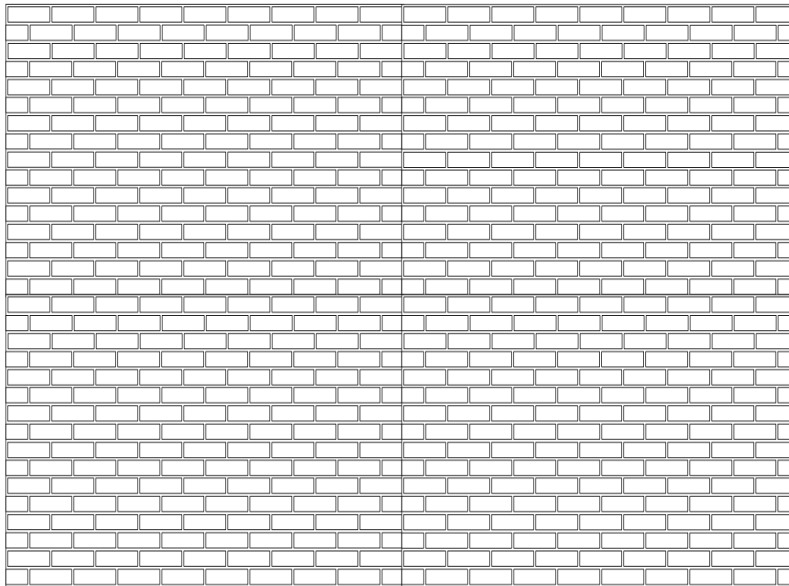
Patent No. US 8,852,724 B2

Sheet size:	72"W X 42.656"H
Square ft per sheet:	21.328"
Vertical joint width:	3/8"
Horizontal joint width:	.416"
Joint height:	1/4"

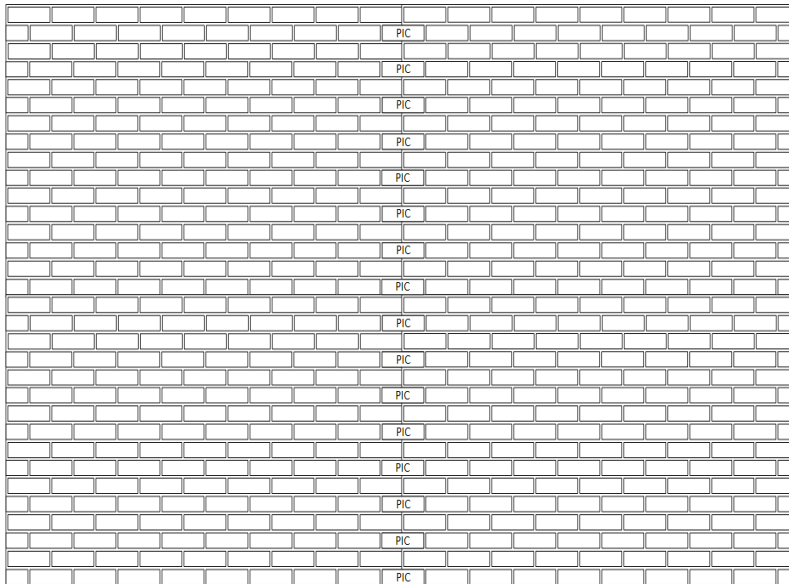
Available in thin and thick plastic

Solocast Seamless

Formliners placed together



PICs placed on formliners to create seamless pattern





ADVANCED FORMLINERS, LLC
www.advancedformliners.com

1000XXL 1/2 BOND MODULAR BRICK

SOLOCAST SEAMLESS IMPRINT FORMLINER

Patent No. US 8,852,724 B2

Sheet size:	72"W X 42.656"H
Square ft per sheet:	21.328"
Vertical joint width:	3/8"
Horizontal joint width:	.416"
Joint height:	1/4"

Available in thin and thick plastic

Solocast Seamless

Completed Wall

