



ADVANCED FORMLINERS, LLC
www.advancedformliners.com

401 RANDOM 1 1/2" PLANKS WITH VARYING DEPTHS

SOLOCAST SEAMLESS FORMLINER

Patent No. US 8,852,724 B2

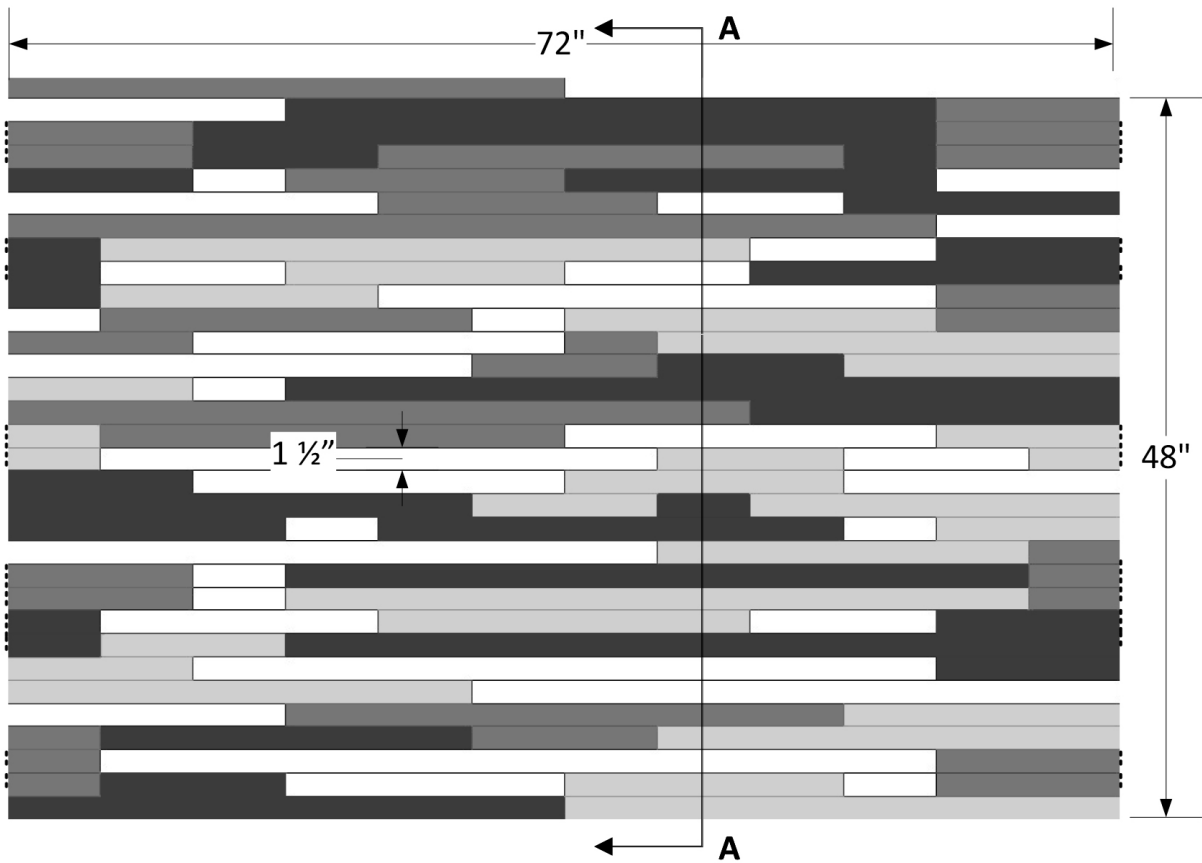
Sheet size: 72" W X 48" H

Square ft per sheet: 24

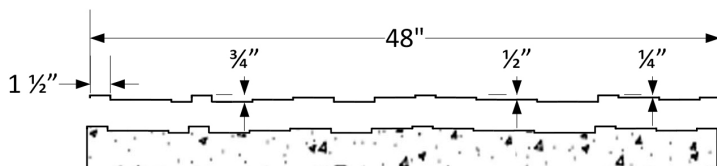
Varying Depths: 0" - 3/4"

Formliner comes with patented insert covers to make it seamless

Solocast Seamless



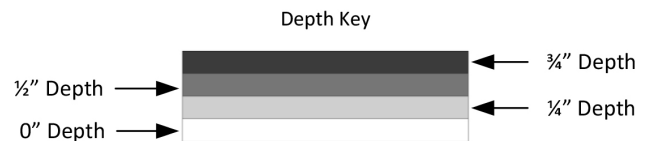
Section A-A



-----Patented Insert Covers (PIC)

Part Size:
72" W x 48" H

Maximum Depths: 3/4"



ADVANCED FORMLINERS, LLC
www.advancedformliners.com

Bob Calmes, National Sales Manager
(920) 819-9851 | bob@advancedformliners.com



401 RANDOM 1 1/2" PLANKS WITH VARYING DEPTHS

SOLOCAST SEAMLESS FORMLINER

Patent No. US 8,852,724 B2

ADVANCED FORMLINERS, LLC
www.advancedformliners.com

Sheet size: 72" W X 48" H
Square ft per sheet: 24
Varying Depths: 0" -3/4"

Formliner comes with patented insert covers to make it seamless

Solocast Seamless

Formliners with Patented Insert Covers Placed





ADVANCED FORMLINERS, LLC
www.advancedformliners.com

401 RANDOM 1 1/2" PLANKS WITH VARYING DEPTHS

SOLOCAST SEAMLESS FORMLINER

Patent No. US 8,852,724 B2

Sheet size: 72" W X 48" H

Square ft per sheet: 24

Varying Depths: 0" -3/4"

Formliner comes with patented insert covers to make it seamless

Solocast Seamless

Completed Wall



ADVANCED FORMLINERS, LLC
www.advancedformliners.com

Bob Calmes, National Sales Manager
(920) 819-9851 | bob@advancedformliners.com