



# 1100XXL AMERICAN BOND MODULAR

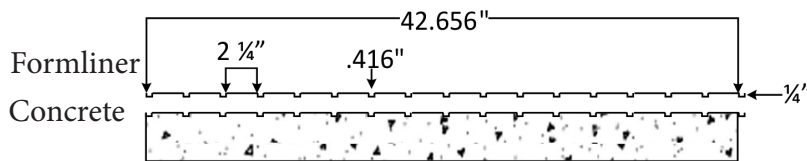
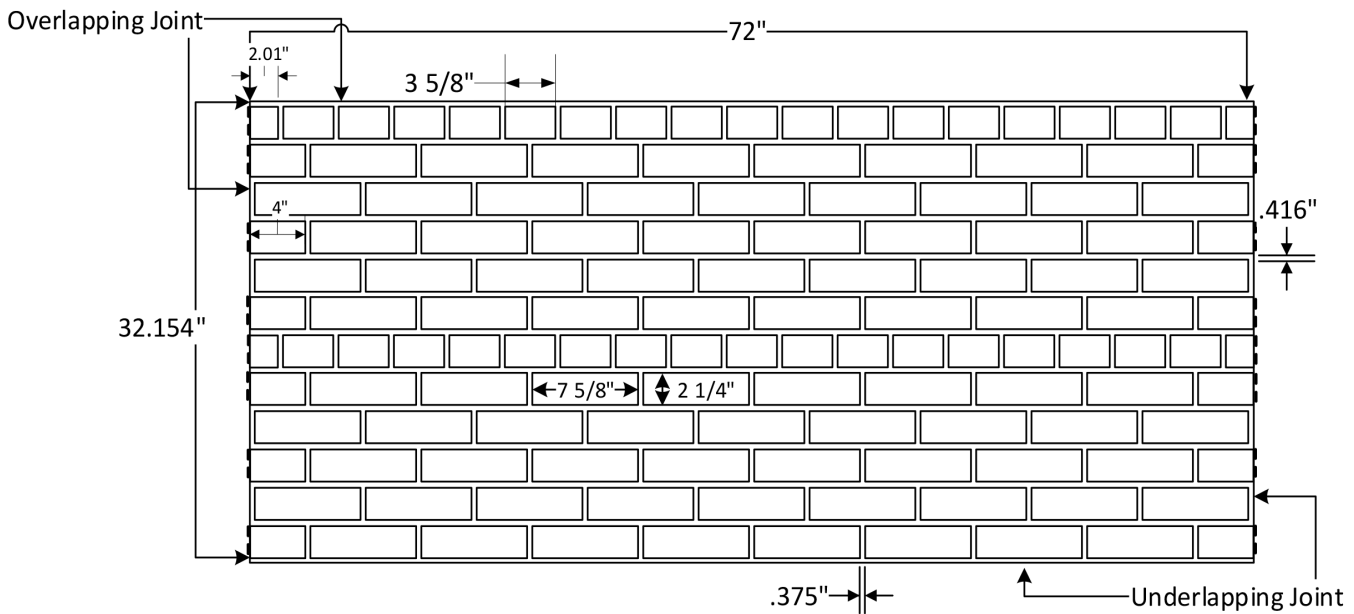
SOLOCAST SEAMLESS MASONRY FORMLINER

Patent No. US 8,852,724 B2

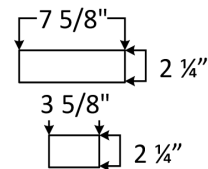
ADVANCED FORMLINERS, LLC  
www.advancedformliners.com

Sheet size: 72"W X 42.656"H  
 Square ft per sheet: 21.328"  
 Vertical joint width: 3/8"  
 Horizontal joint width: .416"  
 Joint height: 1/4"

**Solocast Seamless**



Patented Insert Covers



----- Match	Brick Size:	Part Size: 72" W x 32.154" H	Maximum Depth: 1/4"
Patented Insert Covers (PIC):	7 5/8" W x 2 1/4" H		
PIC 1 7 5/8" W x 2 1/4" H	3 5/8" W x 2 1/4" H		
PIC 2 3 5/8" W x 2 1/4" H			



# 1100XXL AMERICAN BOND MODULAR

SOLOCAST SEAMLESS MASONRY FORMLINER

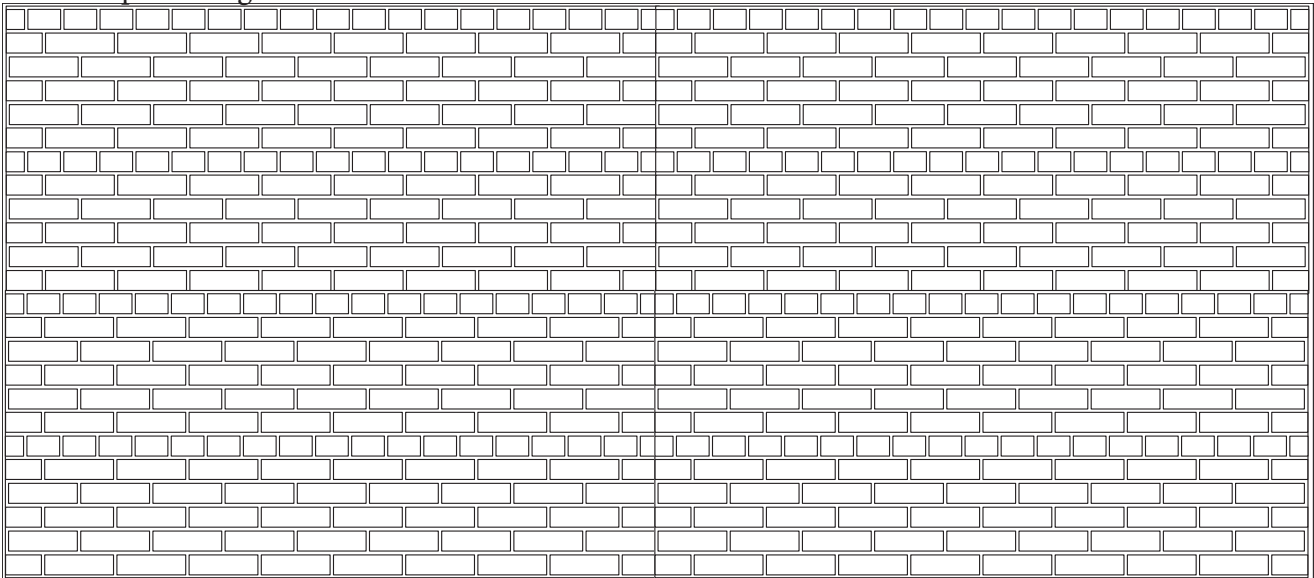
Patent No. US 8,852,724 B2

ADVANCED FORMLINERS, LLC  
www.advancedformliners.com

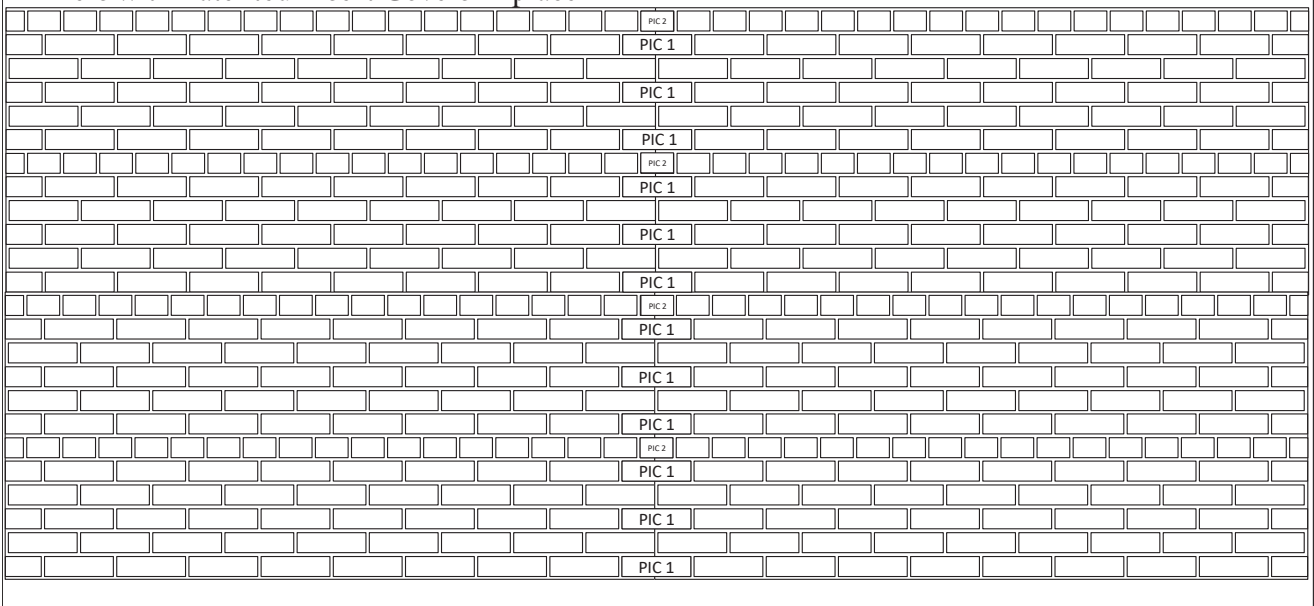
Sheet size: 72"W X 42.656"H  
Square ft per sheet: 21.328"  
Vertical joint width: 3/8"  
Horizontal joint width: .416"  
Joint height: 1/4"

## Solocast Seamless

### 1. Formliners placed together



### 2. Formliners with Patented Insert Covers in place





# 1100XXL AMERICAN BOND MODULAR

SOLOCAST SEAMLESS MASONRY FORMLINER

Patent No. US 8,852,724 B2

ADVANCED FORMLINERS, LLC  
www.advancedformliners.com

Sheet size: 72"W X 42.656"H  
Square ft per sheet: 21.328"  
Vertical joint width: 3/8"  
Horizontal joint width: .416"  
Joint height: 1/4"

---

## Solocast Seamless

### 3. Completed wall

