



# 203 1/3 BOND 8", 4" SMOOTH STONE

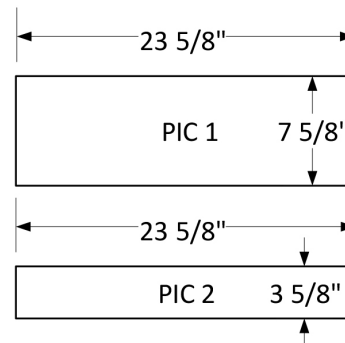
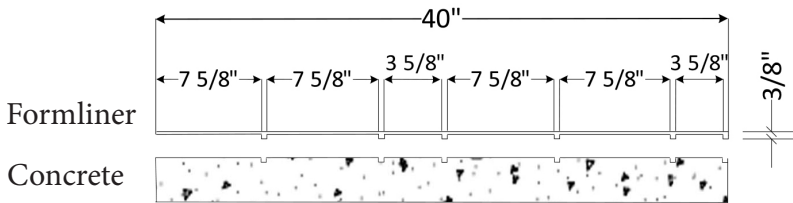
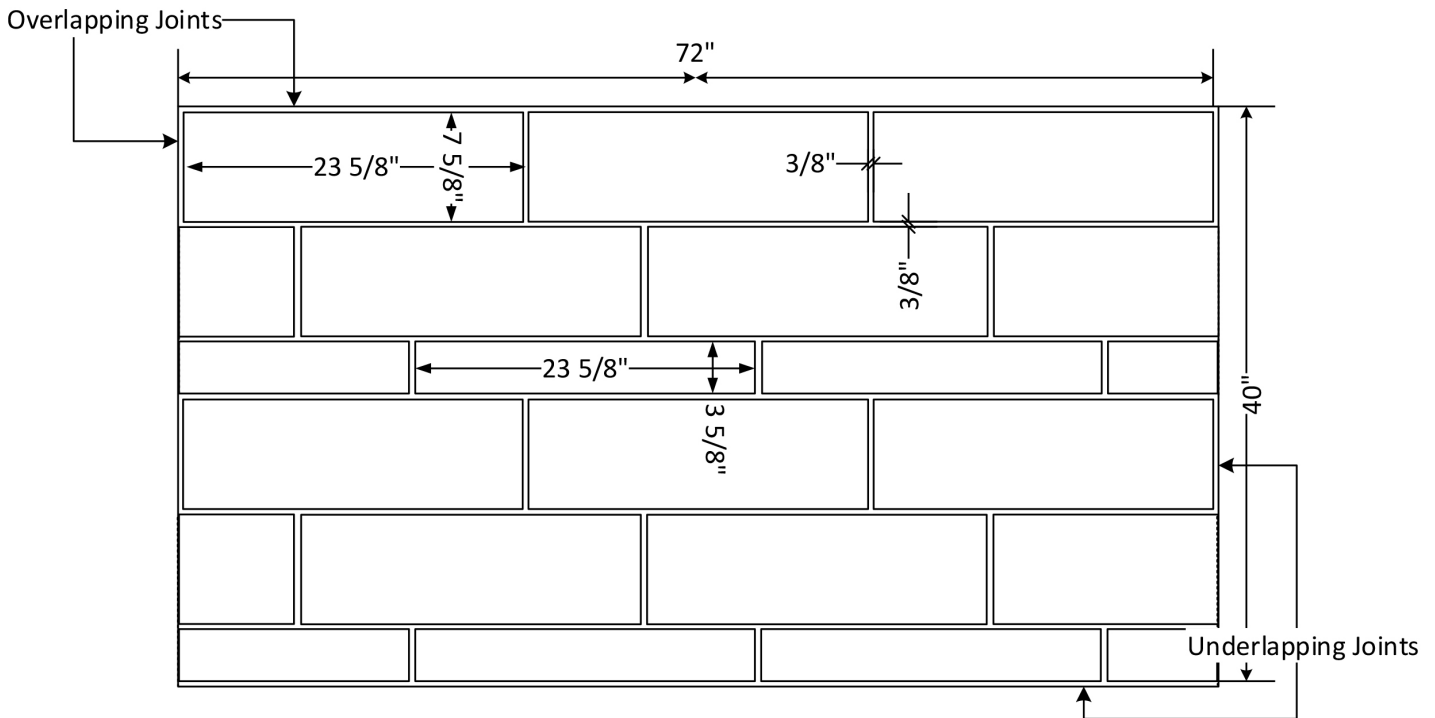
SOLOCAST SEAMLESS FORMLINER

Patent No. US 8,852,724 B2

ADVANCED FORMLINERS, LLC  
www.advancedformliners.com

Sheet size: 72" W X 40" H  
 Square ft per sheet: 20  
 Vertical joint width: 3/8"  
 Horizontal joint width: 3/8"  
 Joint height: 3/8"

## Solocast Seamless



----- Match	Stone Size: 23 5/8" x 7 5/8"	Part Size: A: 72" W x 40" H	Max. Depth: 3/8"
Patented Insert 23 5/8" x 7 5/8"	23 5/8" x 3 5/8"		
Cover (PIC): 23 5/8" x 3 5/8"			



# 203 1/3 BOND 8", 4" SMOOTH STONE

SOLOCAST SEAMLESS FORMLINER

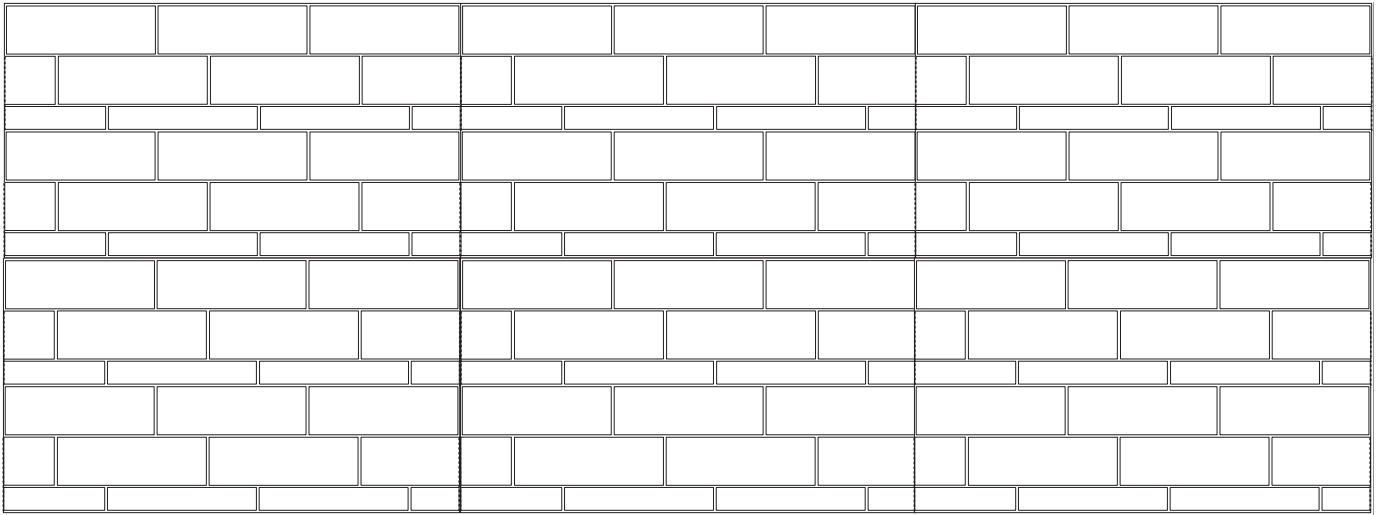
Patent No. US 8,852,724 B2

ADVANCED FORMLINERS, LLC  
www.advancedformliners.com

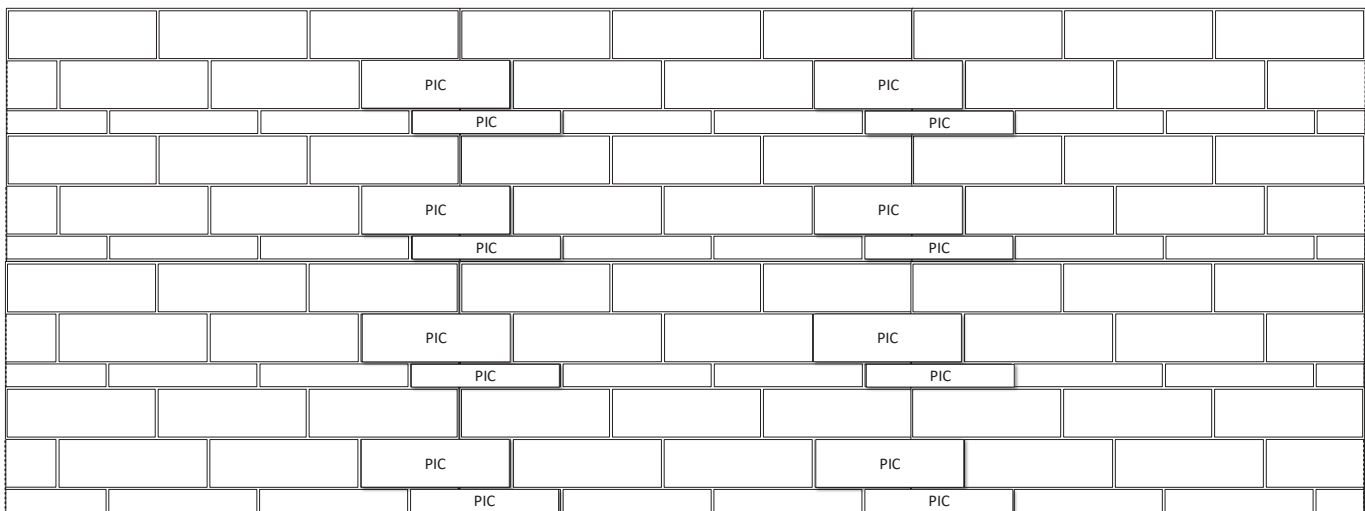
Sheet size:	72" W X 40" H
Square ft per sheet:	20
Vertical joint width:	3/8"
Horizontal joint width:	3/8"
Joint height:	3/8"

## Solocast Seamless

Formliners placed together



PICs placed on formliners to create seamless pattern





# 203 1/3 BOND 8", 4" SMOOTH STONE

SOLOCAST SEAMLESS FORMLINER

Patent No. US 8,852,724 B2

ADVANCED FORMLINERS, LLC  
www.advancedformliners.com

Sheet size:	72" W X 40" H
Square ft per sheet:	20
Vertical joint width:	3/8"
Horizontal joint width:	3/8"
Joint height:	3/8"

## Solocast Seamless

Completed Wall

